

MELANGE

Semi Automatic Gyroscopic Mixer

Operating and Service Manual



User's Manual

Gyroscopic I Mixer

MELANGE

Version Phoenix 1.1 _ 15-08-2012

© COPYRIGHT 2008, Phoenix Mixer India Pvt. Ltd. all rights reserved.

No part of this manual may be reproduced in any form, or by any means, electronic or mechanical, including photocopying and recording, without prior written permission of Phoenix.

Information in this manual is subject to change without notice and does not represent a commitment on the part of Phoenix.

Unless otherwise indicated, all references to companies, names, data and addresses used in the screens and / or examples are purely coincidental and serve only to clarify the use of the Phoenix Mixer.

Phoenix shall not be liable for technical or editorial errors or omissions made herein; nor for incidental or consequential damages resulting from the performance or use of this material.

If you require additional copies of this manual or further technical information about it, please write to:

Phoenix Mixer India Pvt. Ltd.
Plot No 7, Collage Road, Vadkun,
Dahanu Road- 401602
Dist: Palghar, Maharashtra
INDIA
Phone: + 91-2528 221120/223324
www.phoenixmixer.com

An ISO 9001:2015 Certified Company

Printed in India

INDEX

1.	SAFETY INSTRUCTIONS.....	4
2.	INTRODUCTION.....	5
3.	TECHNICAL SPECIFICATIONS.....	6
4.	WARRANTY TERMS.....	8
5.	SAFETY SPECIFICATIONS.....	9
6.	INSTALLATION.....	10
7.	CONTROLS.....	14
8.	OPERATIONS.....	15
9.	MAINTENANCE & TROUBLESHOOTING.....	17
10.	SCHEMATIC DIAGRAM	21
11.	SPARE PARTS LIST	23



1. SAFETY INSTRUCTIONS

- **Read safety instruction carefully and follow them for your own protection.**
This Product is use on a nominal 115 or 230 Volt circuit, as shown on the Name plate.
Connect the Product to an outlet having the same configuration as the Plug.
Wear safety Shoes when installing or relocating the machine.
Make sure the machine stands securely.
Keep your place clean & tidy. There is risk of accidents at untidy work place.
- **Close the Machine when it is not being used.**
Machine shall be connected to dedicated electrical circuit- No other device shall be connected to this circuit.
This product is equipped with a cord having a grounding wire with an appropriate grounding plug. The plug must be plugged into an outlet that is properly installed and grounded in accordance with all local codes and ordinances.
This product shall be connected to a dedicated electrical circuit – no other devices shall be connected to this circuit.
Removal of the plug from the outlet is the means for isolating the mixer from the power supply. Ensure that the mixer is installed with the plug easily accessible to the operator.
This product is designed to operate only when the door is closed. **DO NOT ATTEMPT TO ALTER ELECTRICAL INTERLOCK MECHANISM**
In case of emergency, press the Red Emergency Stop button.
- **Do not overload the machine. Check that the weight and dimension of the mixing can are suitable**
Use only undamaged and sturdy Mixing Can, If you don't, the container may burst.
Never lift large and heavy Can into the machine.
The mixing Can has to be closed completely.
- **Make sure that the mixing Can sits in central position on mixing table. Secure the container handle with rubber bands or adhesive tape.**
Take good care of the machine. Make sure that the moving parts move smoothly and without restriction. Follow the maintenance instruction.
- **Do not use high pressure equipment to clean the machine.**
Make sure that the safety devices work properly and are clean.
- **Do not use the machine if the door or the plastic shutter is damaged. if the shutter strip is broken, do not reach into the interior. There is risk of injury from rotating components.**
- **Do not start the machine with shutter open. Pull out power plug! There is high risk of accidents!**
Before switching on the machine after maintenance work, check that no spanners or setting tools are left inside the machine.
Examine the machine for signs of damage. Check regularly that all parts are in good working condition. Have repairs carried out only by the manufacturer or an approved specialist.
Trained and authorized personnel shall use this product.

2. INTRODUCTION

MELANGE is a revolutionary mixer, which is ideal for all your mixing requirements. MELANGE Mixer performs gyroscopic action, which enables in effective mixing, uniform blending and making homogeneous mixer.

The MELANGE mixer is specifically designed for point-of-sale color mixing applications as well as for semi-industrial applications.

This mixer is ideal for mixing small, medium, large cans up to 35kgs.

MELANGE is user friendly.

The MELANGE has been designed to meet the demands of the retail market.

The dimension of the machine makes it versatile and suitable for use in all environments.

The unique design results in reduced maintenance and in color mixing at the lowest cost per liter produced.

MELANGE is a rugged and reliable mixer which performance and design exhibits the qualities of a strong and sturdy engineering product and low maintenance.



Phoenix shall not be liable for any damage or injury incurred by non-compliance with these regulations, or by not taking the usual and accepted precautions in handling, operation or repair, even if not expressly stated in this manual.

3. TECHNICAL SPECIFICATIONS

PERTICULAR	SPECIFICATION
MAXIMUM CAN WEIGHT	40 KG
MAXIMUM CAN HEIGHT	400 MM
MAXIMUM CAN DIAMETER	240 MM
OVAL AND MULTIPLA CANS	YES
CAN LOADING	MANUAL
CAN MIXING (MIN-MAX) 1 LIT.	1-5 NOS(Adaptor Disc)
CAN MIXING (MIN-MAX) 4 LIT.	1 NO
CAN MIXING (MIN-MAX) 10 LIT.	1 NO
CAN MIXING (MIN-MIX) 20 LIT.	1 NO
MINIMUM CAN HEIGHT	70 MM
GYRO OPEN (MAX)	410 MM
GYRO CLOSE (MIN))	65 MM
GYRO RPM	120 RPM
BOTTOM DISC RPM	240 RPM
CLAMPING	MANUAL
VERTICAL POSITIONING	MANUAL MACHANICAL LOCK-PIVOT
MAIN MOTOR	1 HP,SINGLE PHASE,230/110Vac,50/60 Hz.1440 RPM
MAXIMUM NOISE LEVEL	55 Db
POWER SUPPLY	230V/50-60 Hz
POWER SUPPLY (OPTIONAL)	110 V/60Hz
ELECTRONICS	BOARD
TIMER	MACHANICAL TIMER (5 Min.)
LOCKING DOOR DEVICE(Safety Door S/W)	AVAILABLE
GYROSCOPIC MOTION	CLOCKWISE
EMERGENCY SWITCH	AVAILABLE
TRANSPORT ROLLER(Custer Wheel)	AVAILABLE
MACHINE DIMENSION (WxDxH)	815x690x1085 MM
PACKING DIMENSION (WxDxH)	965x890x1315 MM
MACHINE NET WEIGHT	155 KG
MACHINE GROSS WEIGHT	175 KG

EN 292 Part 1 and 2: 1991	Safety of Machinery – Basic concepts, general Principles for design
EN 418: 1992	Safety of Machinery – Emergency stop equipment, Functional aspects
EN60204 Part 1: 1997	Safety of machinery – Electrical equipment of Machines -Specifications for general requirements.
EN 954-1: 1996	Safety of Machinery – Safety related parts of control Systems- Part 1: General principles for design
EN 1088: 1995	Safety of machinery-Interlocking devices associated with guards.
EN 294: 1992	Safety of machinery – Safety distances to prevent danger zones being reached by the upper limbs.
EN 953: 1997	Safety of machines – Guards-General requirements for the design and construction of fixed and movable for coating materials.
PrEN 12757-1	Mixing machinery for coating materials

- Materials used by Phoenix to manufacture the machine doesn't undergo corrosions or deteriorations (They are compatible) with the paints which have to be mixed.

4. WARRANTY

LIMITED WARRANTY: Phoenix warrants each unit manufactured to be free of defects in material and workmanship for a period of twelve months. This warranty applies to single-shift operation and is counted from the date of initial start-up. It cover all defects arising from faulty material or workmanship.

Please Note that all warranty claims must be accompanied by the original delivery note or initial start – up report.

All essential warranty repair work must only be carried out by trained service engineers or by third parties authorization form Phoenix. Unauthorized repair may render the warranty null and void.

Please return any defective parts or machines carriage-paid to our factory. Phoenix reserves the rights to decide on whether cost-free parts replacement is applicable. Parts and labour covered by the warranty will be supplied free of charge. The warranty does not cover travel cost, expenses or possible overnight accommodation resulting from warranty repairs carried out off our premises.

Any other responsibility, with particular reference to damage claims, including foregone profit or other material losses on the part of the customer, is expressly excluded.

Warranty and liability claims for personal or material damage are excluded if attributable to one or more of the following causes.:

The part unit shall be returned with transportation charges prepaid. If the fault has been caused by misuse or abnormal conditions of operation, repairs will be billed at a normal cost. In this case, an estimate will be submitted before works is started, if requested.

Always include serial number in any correspondence concerning the part unit.

The warranty expires: Twelve month after date of invoicing

- Operation of the machine with defective safety or protection device.
- Incorrect operation of the machine, as define in the operation instructions.
- Failure to observe the instruction in the operating manual with respect to set up, initial start up, operation and maintenance of the machine.
- Fault and damage cause by dirt or incorrect cleaning schedules, with particular reference to leaks and damaged Cans.
- Unauthorized structural modification to the machine.
- Incorrect monitoring of parts subject to wear and consumables.
- Unauthorized repairs or fitting of non original parts.
- Damage caused by the impact of foreign bodies or majeure force.

We reserve the right to make amendments as a result of on going advance in the technical field.

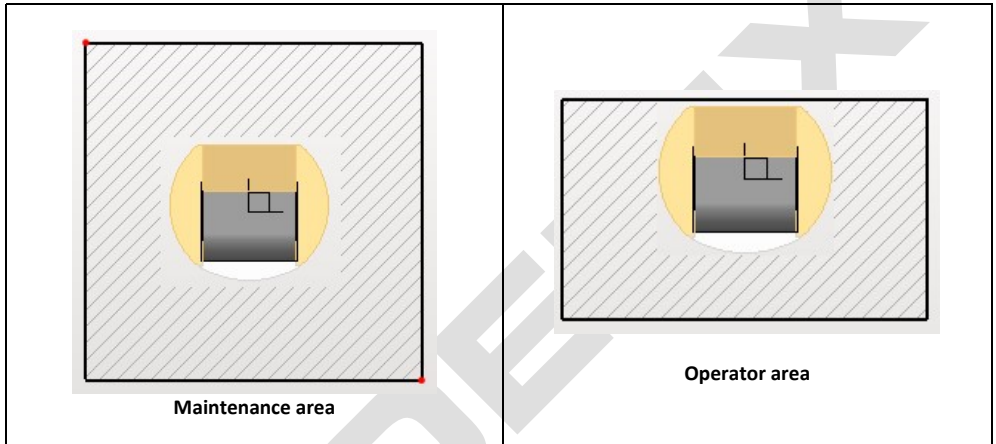
5. SAFETY SPECIFICATIONS

Compliance with safety requirements:

This mixer must be used and serviced by authorized and trained personnel only. Improper use or servicing may result in dangerous situations or accidents.

Risk to personnel is possible in two areas:

Operator area
Maintenance area



	<p>THIS EQUIPMENT MUST BE GROUNDED. Attention!!!</p> <p>Connect this product to a dedicated electrical circuit – no other devices shall be connected to this circuit. Do not use extension cords to connect this product.</p>
--	---

	<p>Attention!!!</p> <p>Only trained personnel shall be permitted access to the electrical wiring within the machine. DO NOT USE THIS PRODUCT IF THE BACK PANEL IS NOT IN PLACE.</p>
--	--

The machine is equipped with a power supply cable having the following specifications:

Length: 8 FT

Size: 14 AWG

The machine shall be connected to a dedicated, grounded circuit, protected by a 15 A circuit breaker. All wiring shall be in accordance with local codes

Important:

The power supply cable conductors are color-coded as follows:

GREEN or GREEN/YELLOW	—	GROUND
WHITE or BLUE/BLACK	—	NEUTRAL
BLACK or BROWN/RED	—	LINE

Service safety rules:

1. Prior to performing any maintenance or inspection of the MELANGE disconnect the power plug from the electrical outlet in order to ensure that the MELANGE cannot start unexpectedly.
2. To prevent injuries to personnel ensure that all removable panels are in place and properly secured except for any necessary inspections or maintenance.
3. Do not disable or override any of the installed safety features such as the door lock system.
4. The MELANGE shall be installed in an environment conforming to the appropriate local regulations. A permit issued by the local authority may be required. Keep the number of paint cans in the immediate area of the machine to a minimum.
5. Do not store flammable materials or other materials inside the machine. The area in which the MELANGE is installed must be kept free of exposed flames, incandescent fixtures or other devices that might create sparks.
6. It is recommended that a ventilation system, guaranteed to maintain the concentration of dangerous vapors around electrical components at less than 30%, be installed.
7. When the MELANGE is not being used for a period of time (such as at the end of the work day), ensure that it is empty (no paint can inside), close the door and unplug the power plug from the outlet.
8. Ensure that all tools are removed from inside the machine after any maintenance work.

RESIDUAL RISK**Residual risks list for the user:**

The MELANGE, and its operating and service instructions, have been developed giving careful consideration to the safety of the user and service technician. However, there are situations where risks can be reduced but not eliminated completely.

RISK	PRECAUTION
Injury or crushing during loading and unloading operations.	Use protective gloves and safety shoes during loading and unloading operations.
Abrasions and injuries caused by sharp edges on the cans being used	Use protective gloves during loading and unloading operations.
Liquid leakage from the cans being used	Thoroughly clean the operator and maintenance areas. Keep these areas clean.

Personal protection for user:

The MELANGE, when properly operated and maintain, presents minimal risk to the user. However, it is recommended that the user wear suitable protective equipment (safety glasses, safety shoes with non-slip soles and gloves), in particular when loading and unloading the mixer.

General danger situations:

There are no specifically identified hazard related to the operation and maintenance of the MELANGE (e.g. fire risk, issue or dispersion of dangerous products). However, it is recommended that a powder type fire extinguisher, suitable for electrical fires, be readily accessible.

Safety devices:

The machine is equipped with the following safety devices:

- Emergency Stop Button
- Door Lock and sensor

Emergency Stop Button:

For safety reasons, all users should know the location of the Emergency Stop button, and how to use it. The RED Emergency Stop push button is located on the Left Hand control panel on the top front of the mixer – to the left of the door. Pushing the button will immediately cut power to the motor control relay, stopping the motor. To reset the button and restore the mixer to normal operation mode, rotate the button clockwise.

Door Lock and sensor:

The MELANGE is equipped with a safety device which prevents start up of the mixing cycle when the door is in the open position. It also locks the door in the closed position during the mixing cycle.

6. INSTALLATION

INSTALLATION CONDITIONS:

Before unpacking and installing the MELANGE Mixer, please make sure of the following:

- The crate/packaging in which the MELANGE was shipped has not been damaged in any way.
- The floor on which the MELANGE is to be located is firm and level
- An electrical receptacle on a properly grounded, dedicated, 15 A, 115 or 230 V circuit is available in the immediate vicinity. The circuit shall be installed in accordance with local codes. The receptacle shall be of a configuration appropriate for the voltage and current rating of the circuit.

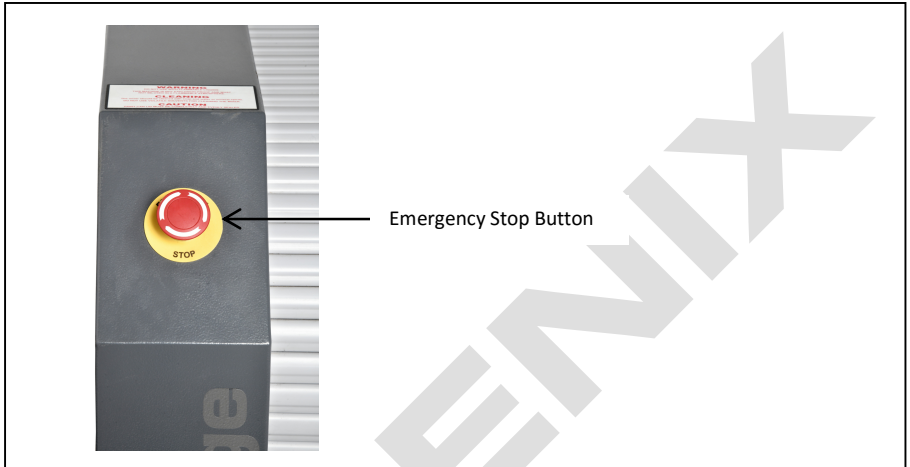
INSTALLATION:

It is recommended that, during the installation of the mixer, protective gloves be worn in order to prevent hand injuries.

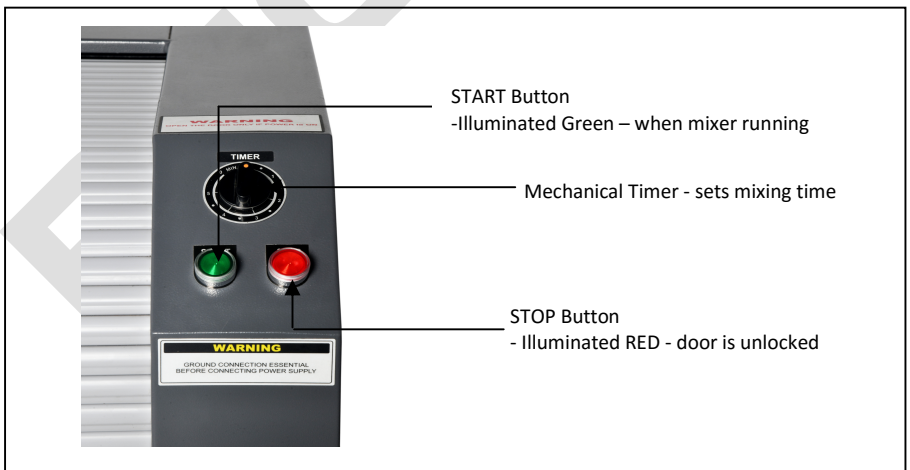
- Unpack the MELANGE Mixer.
- Ensure the machine has not been damaged in any way
- Position the mixer in the desired location. It is equipped with rollers to aid in positioning.
- Using the four leveling feet, level the machine, ensuring that all four feet are properly supporting the machine. Lock the leveling legs in place by tightening the jam nuts.

7. CONTROLS

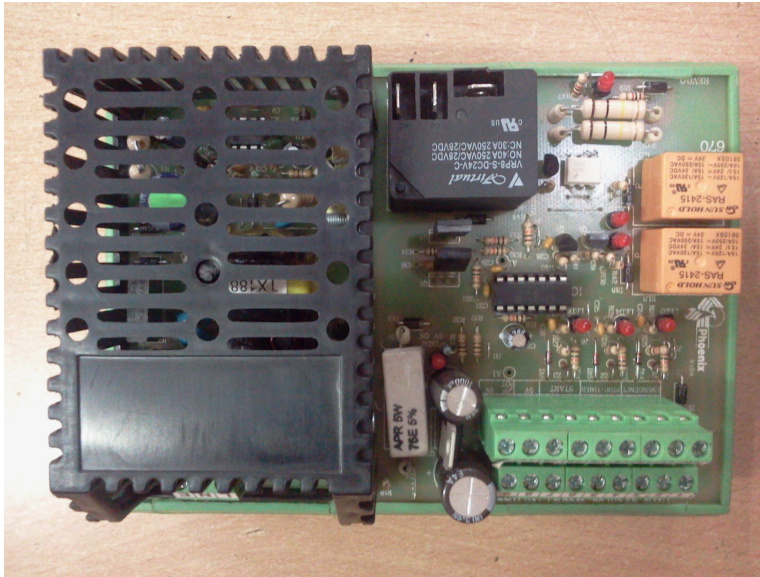
LEFT HAND CONTROL PANEL



RIGHT HAND CONTROL PANEL



LOGIC CARD AS670-101-ME



8. OPERATIONS

TURN ON MACHINE (Connect to power) :

Note: The door will not open until the MELANGE mixer is connected to the building power.

- Ensure the Emergency Stop button is engaged – push to engage if necessary
- Plug the mixer into the appropriate electrical receptacle. Ensure the circuit breaker on the left hand side the mixer, near the top rear corner, is ON.

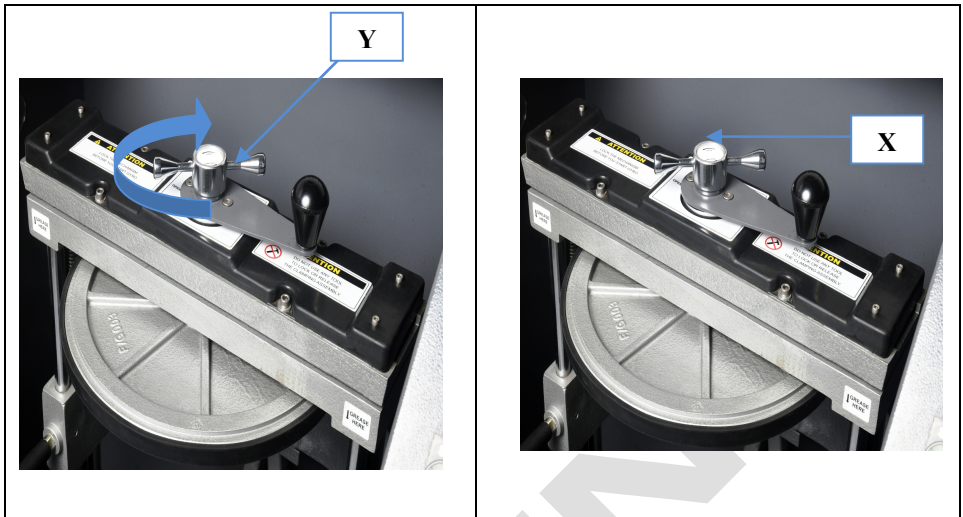
Mechanical Timer: The STOP button will light up RED For few second. Release the Emergency Stop button by turning it clockwise. The stop button will continuously illuminated RED and the door will unlock.

CAN LOADING:

1. Open the MELANGE Mixer door to its fully open position.
2. Ensure the Can Holder Assembly is in the vertical, top dead center (TDC) position, with the Clamp Mechanical Mechanism at the top, and locked in place. If it is not, use the two handles on the front of the Can Holder Assembly, to rotate it to the TDC position. Ensure the lock mechanism engages and the Can Holder Assembly is locked in place.
3. Referring to the illustrations, open the Can Clamping Plates as follows:



- Rotate Handle for spocket (X).
- Using the taper knob, rotate the mechanism anti-clockwise to open the clamping plates.
- Position the can on the bottom Disc. Using the concentric rings on the bottom Disc as a guide, ensure the can is properly centered.



- U Rotate the mechanism in clockwise direction to securely clamp the can between the plates.
- Rotate the Lock Unlock Handle (Y) in clockwise direction to lock Handle for spocket.
- Close the door to the fully closed position.

Note: Do not force the door. If the Handle for Spocket (X) and Lock Unlock Handle (Y) is unclamped.

MIXING:

Mechanical Timer:

- Set the desired mix time by turning the knob on the mechanical timer to the appropriate position.
- Push the “START” button to start the mixing cycle.

The “START” button will be illuminated GREEN and the light on the “STOP” button will turn OFF. The door will lock, the Can Hold Assembly Lock will disengage and the Can Holder Assembly will spin for the set time to mix the paint.

Once the set time has expired, the “STOP” button will illuminated RED, the light in the “START” button will turn OFF and the Can Holder Assembly will come to a stop. The light in the “STOP” button staying on and the door will unlock.

To STOP the mixer during an emergency situation, push the Emergency Stop button. Once the machine has stopped, release the Emergency Stop button by turning it clockwise. The door will unlock.

USE THE EMERGENCY STOP BUTTON IN AN EMERGENCY SITUATION ONLY

Note: Always remove the can from the mixer after the mix cycle has been completed. Follow the UNLOADING instructions. Below.

UNLOADING THE CAN:

1. Open the MELANGE Mixer door to its fully open position.
2. Using the two handles on the front of the Can Holder Assembly, slowly rotate the Assembly to the vertical, top dead center (TDC) position, with the Clamp Mechanical Mechanism at the top. When it reaches this position the Clamp Assembly Lock will engage, locking it in place.

Note: If, for some reason, it is necessary to rotate the Can Holder Assembly after the lock has engaged, Pull Shutter and Rotate the assembly off the TDC position. The lock will remain in the disengaged position until the assembly is returned to the TDC position.



9. MAINTENANCE & TROUBLESHOOTING

Monthly Maintenance:

- 1) Apply grease on Guide shaft of EP 90 Lithium base
- 2) Apply grease also on Spine (Below the Bottom Disc)

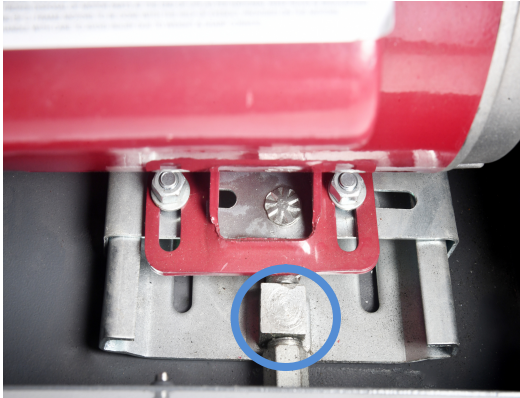
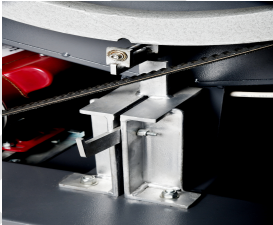
Troubleshooting:

PROBLEM	TROUBLE SHOOTING
Machine is not turning on	<ul style="list-style-type: none"> • Check the Mains supply. • Check MCB Position, it should be ON. • Check the Power supply • Check plug or lose wire. • Check motor belts.
Gyro vertical position not locked	<ul style="list-style-type: none"> • Check Pivot mechanism back side of the machine. • Check shutter end stripe whether it's broken or not. • Check slot at pulley.
Main Motor not running / working	<ul style="list-style-type: none"> • Check Emergency switch • Check Motor mechanism and • Motor capacitor. • Check supply on card.
Machine vibrates during operation	<ul style="list-style-type: none"> • Check the floor flatness. If the floor surface is not plain, then shift the Machine on a plain / flat surface.
Machine makes a loud noise after every revolution	<ul style="list-style-type: none"> • Check the foundation of the Motor. • Check the tension of the belt joining the Motor pulley and the Main Wheel. If found loose, adjust it to the proper tension. • Check whether the belt has worn out. • If yes, then replace the same with a new one.
Container clamped does not rotate along its axis even though the machine is rotating.	<ul style="list-style-type: none"> • Check the "V" belt for proper tension. • If the belt is found loose then replace the same with a new one.
Clamped container becomes loose	<ul style="list-style-type: none"> • Tight handle for sprocket properly. • Tight Lock / Unlock handle.
Aluminum Plates does not slide smoothly.	<ul style="list-style-type: none"> • Clean the Guide Shafts and apply the general-purpose grease
Machine is giving shock while in operation	<ul style="list-style-type: none"> • Check for proper grounding. If the earthing is not proper consult an Electrician.
Timer Failure	<ul style="list-style-type: none"> • Check Power ON • Rotate Timer Knob • Reset Knob

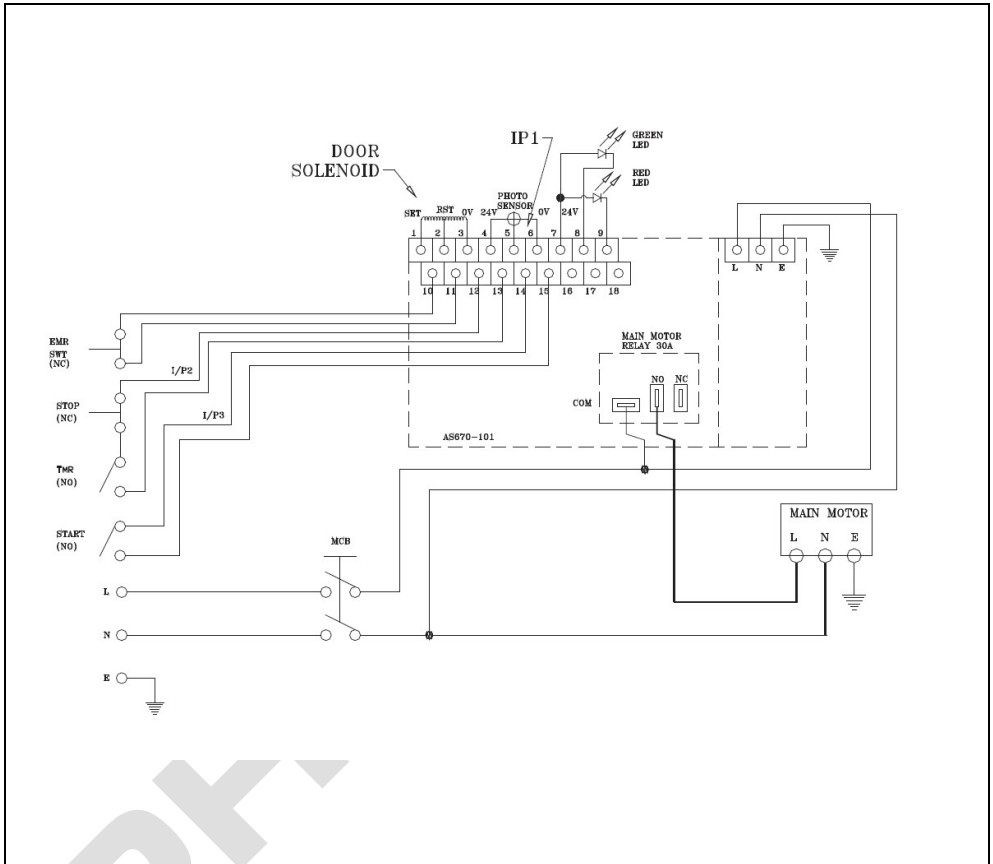
Note: Shutter will not open when the Power is OFF

System Error : Emergency Press	<ul style="list-style-type: none"> • Turn the emergency push button to Clockwise direction. • Check the wire connection on the emergency push button. • Defective emergency push button cable.
System Error : Door Switch Faulty	<ul style="list-style-type: none"> • Check Position of Door. • Check the cable connection of Door Switch.(If its Photo sensor Check reflector light) • Check Reflector

Adjusting Transmission Belts:

	<p>Remove Cover for Motor from the machine.</p> <p>Check belt tension, which should bend 5 – 10mm while pressed with fingers in its side.</p> <p>To Correct the tension, set the bolt with motor as shown in the picture.</p> <p>Check the belt by rotating the main pulley. The belt should not be worn.</p> <p>Put the back panel in its original position.</p>
Pivot Assembly	
	<p>Remove back panel from the machine to view the Pivot assembly.</p> <p>It has been used to work as vertical position at Gyro assembly.</p>

10. SCHEMATIC DIAGRAM



11. SPARE PART LIST

Product Code	Description	Qty
	Gyro	
ME/G001	Fix Pulley-ME	1
ME/G002	Top Plate-ME	1
ME/G003	Pulley 600	1
ME/G004	Guide Shaft ME	4
ME/G005	Spocket 10 Teeth	2
ME/G006	Spocket 25 Teeth	1
ME/G007	Chain 3/8"x960mm	1
ME/G008	Pinion For Spocket	1
ME/G009	Lock -Unlock Handle	1
ME/G010	Lock Pin for Bearing	2
ME/G011	Main Shaft -ME	1
ME/G012	Screw Shaft- Spocket	2
ME/G013	Drive Pulley for Bottom Disc-ME	1
ME/G014	Bush-LH-Acme	2
ME/G015	Bush-RH-Acme	2
ME/G016	Roller Pivot	1
F/G002	C Arm	1
F/G003	Top Disc-Europe	1
F/G005	Bottom Disc-Europe	1
F/G006	Supporting Plate for Top & Bottom Disc	2
F/G008	Bottom Plate	1
F/G016	Sq. Plate for Drive Pulley	1
F/G017	Spline for Drive Pulley (Round Hollow)	1
F/G018	Spline for Drive Pulley /Bottom Disc(Hex Middle)	1
F/G019	Spline for Bottom Disc (Hex Solid)	1
F/G040	Spacer for Guide Pulley	4
F/G045	Guide Pulley -Metal	2
	Frame	
ME/F001	Main Frame -ME	1
ME/F002	Front Panel-ME	1
ME/F003	Back Panel-ME	1
ME/F004	Cover RH Plate-ME	1
ME/F005	Cover LH Plate-ME	1
ME/F006	Bracket for Solenoid ME	1
ME/F007	Cover for Logic-ME	1
ME/F008	Handle for Spocket	1
ME/F009	Arm For Guide Pulley	1
ME/F010	Cover for Motor-ME	1
ME/F011	Logic Board /Plate-300x140x2	1
ME/F012	Pivot	1
ME/F013	Pivot Bracket Stand	1
ME/F014	Pivot Bracket	1
ME/F015	Pivot Cover	1
ME/F016	Shutter Stopper-Pivot	1
ME/F017	L Angle for Foundation-ME	2
F/F020	Nut for Foot	4

Product Code	Description	Qty
	Electrical	
FE006	Cable Gland/PG11	2
FE007	Cable Tie/3.6 X150 MM	10
FE012	MCB/10KA 240/415VACC/10/2POLE/50Hz	1
FE016	Element/S1 - NO/Teknic	1
FE017	Push Button-Emergency/2AML4	1
FE019	Element/S2-NC/Teknic	2
FE025	Motor-1HP/220V/50HZ/1PH/1425RPM	1
FE027	Photo Sensor / QS18VP6LV/10-30VDC	1
FE031	Connector/ Wn-3(Orange Cap)	2
FE034	Push Button- On/green LED/2ALRF3L(24V)/Dc	1
FE035	Push Button- Off/Red L.Ed/2ALRF4L(24V)/D	1
FE036	Din Channel/ MCB Mounting	1
FE040	Cable/1.5 Sq M/3 Core-(Sucko Plug)	1
FE041	Knob For Mechanical Timer	1
FE043	End Lock SOCKN	2
FE071	European Plug with Fuse	1
FE072	Cable Set-ME	1
FE075	Logic Card AS670-101-ME	1
FE111	Door Solenoid Magnet	1
HE032	Mechanical Timer- 5MIN/D Shaft	1

	Assembly	
ME/A001	Frame ME Assembly	1
ME/A002	Frame ME Back Assembly	1
ME/A003	Frame ME Bottom Assembly	1
ME/A004	Gyro ME Assembly	1
ME/A005	Gyro ME Assembly Step 1	1
ME/A006	Gyro ME Assembly Step 2	1
ME/A007	Gyro ME Assembly Step 3	1
ME/A008	Fix Pulley ME Assembly	1
ME/A009	Top Plate ME Assembly	1
F/A018	Bottom Plate Assembly	1
F/A005	Supporting Plate Assembly	1
F/A017	Top Disc Europe Assembly	1
F/A016	Bottom Disc Europe Assembly	1
F/A006	Spline Assembly	1
ME/A010	Arm for Guide Pulley Assembly	1
ME/A011	Pivot Assembly	1
ME/A012	Pivot Bracket Assembly	1
ME/A013	Control Panel Assembly	1
ME/A014	Logic Card AS670 ME Assembly	1
ME/A015	Motor ME Assembly	1
ME/A016	Bracket for Solenoid ME Assembly Step 1	1
ME/A017	Bracket for Solenoid ME Assembly Step 2	1
ME/A018	MCB ME Assembly	1
ME/A019	Shutter ME Assembly	1
ME/A020	Frame ME Back Panel Side cover Assembly	1

Product Code	Description	Qty
	Hardware	
FH004	Bearing-6008 ZZ URB	2
FH005	Bearing-6010 ZZ	1
FH007	Bearing-6205 ZZ	2
FH008	Bearing-6002 ZZ	4
FH009	Bearing-6000 ZZ	2
FH011	Allen Bolt M10x40 (WZ)	4
FH012	Allen Bolt M10x25 (WZ)	2
FH013	Allen Bolt M8x25 SS	8
FH017	Allen Bolt M4x16 SS	8
FH019	Allen Button Head M5x12 SS	4
FH021	Allen CSK M10x25 WZ	1
FH025	Hex Bolt M8x25 - WZ Kg	10
FH026	Hex Bolt M6x20 - (WZ)	12
FH027	Hex Bolt M3x25 SS	4
FH028	Hex Bolt M3x8 - SS	8
FH029	Hex Nut M16 - (WZ) Kg	4
FH031	Nylock Nut M10	2
FH032	Hex Nut M8 - (WZ) Kg	10
FH033	Hex Nut M6 - SS	5
FH035	Hex Nut M3 - SS	6
FH037	Grub Screw M8x10	1
FH039	Grub Screw M6x15	1
FH042	Plain Washer 10x38x3	2
FH043	Plain Washer 8x20x3	24
FH045	Plain Washer 6x25x2 spll mistak	1
FH046	Plain Washer 6x13x2 Kg	20
FH047	Plain Washer 3x8x1	12
FH049	Spring Washer M8 Sq	14
FH050	Crocodial Washer M8	6
FH052	Sim Washer 20x28x0.5	2
FH053	Sim Washer 15x22x0.5	12
FH064	Internal Circlip 50	2
FH066	Internal Circlip 30	4
FH067	Internal Circlip 26	2
FH068	External Circlip 50	2
FH069	External Circlip 32 SPL	2
FH070	External Circlip 25	1
FH071	External Circlip 15	4
FH076	Key 6x6x38 (BER)	1
FH082	Hex Bolt M10x16-(WZ)	1
FH083	Sim Washer 12.2x18x0.5	8
FH085	Allen Bolt M6x15 SS	7
FH086	Allen Bolt M8x15 SS	1
FH087	Sim Washer 25.5x34x0.5	3
FH091	Bearing-6202 ZZ	1
FH093	Allen CSK M5x15	3
FH094	Allen CSK M8x25	1
FH100	Hex Bolt 5/16"x20- (WZ) Kg	2
FH107	Hex Bolt M8x40 - (WZ) Kg	6
FH114	Internal Circlip 35	1
FH118	Nylock Nut M5	5
FH119	Nylock Nut M6	5
FH120	Nylock Nut M8	16
FH154	Allen CSK M6x12	2
FH171	Key 4x4x36	1
FH181	Allen Bolt M5x12 - SS	30
FH296	V Belt A-84/86	1
FH297	V Belt-SPZ 1600 PB-Poly F Plus/1637	1
FH298	Bearing 6800 ZZ	2
FH299	Bearing 1680HH ZZ	2
FH303	Coch bolt-2.5"	2
FH304	Spring Hook-10x8.4x43	1
FH305	Allen Bolt 6x25 half thread	1

Product Code	Description	Qty
	Others	
F.O001	Rubber Lining for Bottom Disc - Europe	2
F.O004	Handle-Black	2
F.O005	Black Cover for Top Plate	1
F.O007	Rubber Bid for Shutter Handle	1
F.O009	Shutter Grey - 615MM	1
F.O010	Sticker-Front Panel-HERO(Dome)	1
F.O012	Sticker-General Warning(4 Language)	1
F.O013	Sticker-Machine Sr.No.	1
F.O014	Sticker-Main Supply Cable-220V-50Hz/110V-60Hz	1
F.O018	Sticker-Warning-Open the Door Only if Power on	1
F.O020	Sticker-Warning of Machine Earthed	1
F.O021	Sticker-Warning of Earth Leakage 1.50 MA	1
F.O023	Sticker-Warning Ground Connection essential	1
F.O024	Sticker-Door will not open untill	1
F.O026	Sticker-MCB	1
F.O027	Adhesive Solution Fevicol SR 998	0
F.O028	Reinforce Bar 8MM 545MM	5
F.O034	Castor Wheel 2" Puff Castor	3
F.O035	Adjustable Foot M16 X 60	4
F.O039	Door Handle	1
F.O044	Sticker-Door Solenoid	1
F.O046	Acrylic Sheet 50 X 40 mm	1
F.O074	Sticker-Melange	1
F.O075	Sticker- Attention- Do not Rines	1
F.O076	Sticker-Attention Do not use any tool	1
F.O077	Sticker-Lock -Unlock	1
F.O078	Sticker-Open-Close	1
F.O079	Sticker-Schematic Diagram -ME	1
F.O080	Operating and Servicing Manual-ME	1
F.O081	Backelite Ball Knob M8	1
F.O082	Acrylic Sheet-115x170	1
F.O083	Telescopic Slider-6"	2
F.O084	Knob 5mm	2
F.O107	Handle DHP94	2
F.O127	Motor Slider	1
F.O133	Motor Pulley /A- 42mm	1
F.O135	Sticker- Attention- Lock the mechanism	2
H.O006	Shutter Handle/43628 / 597 MM	1
H.O018	Sticker-Push Button Yellow	1
H.O041	Sticker Timer 5Min-Alu	1

THANK YOU

Phoenix Mixer India Pvt. Ltd.
Plot No 7, College Road, Vadkun,
Dahanu Road - 401602
Dist: Palghar,
Maharashtra.
INDIA
Phone: + 91-2528 221120 / 223324

www.phoenixmixer.com

An ISO 9001:2015 Certified Company